



Vital Connections of the Midlands Annual Report

2022-2023



Vital Connections
of the Midlands



TABLE OF CONTENTS

• TO OUR STAKEHOLDERS...	3
• Who We Are...	4
• Program Governance...	5
• #ChildCareLetsMeWork...	6
• Health & Wellness...	7
• Dental & Oral Health Services...	9
• Nutrition...	10
• Male Involvement...	11
• Mental Health Services...	12
• Disability Services...	13
• #ChildCareLetMeWork...	14
• Financial Highlights...	15
• Enrollment at a Glance...	17
• Parent Satisfaction Survey...	18
• Staff Satisfaction Survey...	19
• #ChildCareLetsMeWork...	20
• School Readiness Outcomes...	21
• Partnerships...	23

TO OUR STAKEHOLDERS

STRATEGIC HIGHLIGHTS

The 2022-2023 program year marked the third full year of life with the Novel Coronavirus. Due to the diligent work of our staff under the direction of our health coordinator, we never had to close an entire center or a classroom. We continued to have challenges with health-related matters as outbreaks of other illnesses (RSV, Hand, Foot & Mouth and Influenza) significantly limited the attendance of our children and negatively impacted parent engagement opportunities. We took the lessons learned from the previous program years and utilized that experience to better serve our children and families. We have been serving families in-person since July of 2020. We continue to provide virtual services when needed, we provide support groups for staff and families (via Zoom) and provide educational content for our families through our ReadyRosie program. Our Health Coordinator worked tirelessly to ensure that we had the latest information needed to keep our environment safe. This has allowed us to be proactive when addressing any health-related issues. We are supremely confident that we were prepared to meet the challenges set before us while providing an excellent early childhood educational experience for our children and their families. This confidence is based on Vital Connections having a competent, strong, and dedicated leadership team that supports a diverse, experienced, and talented teaching and support staff. Vital Connections accomplished several goals: all three locations are NAEYC (National Association for the Education of Young Children) accredited, all three centers have maintained at A+ rating with South Carolina ABC Quality for the past eight years and children made gains as it relates to school readiness outcomes! With the continued support and guidance provided by both Governing Board and Policy Council members, we are confident that we will continue to provide exceptional services to the communities that we serve. We are proud of the work that we have done and are determined to continue onward toward the path of excellence. Over the course of the 2022-2023 program year, we continued to provide services to families that promote healthy pregnancies (Partners for a Healthy Baby), enhance the development and growth of very young children while support positive parenting and personal (education and employment) development for their caregivers.

We welcome community involvement and engagement of parents to provide input to continuously evaluate ways to enhance the delivery of services to the families we serve. Vital Connections of the Midlands Early Head Start is sincerely grateful to every organization that has supported our role and function and has provided funding or other support enriching our Agency and our ability to serve families and children. As we reflect on the Early Head Start (EHS) Program, we look back on both the program challenges and the EHS successes. We are both encouraged and pleased by the accomplishments we have made this year through hard work, dedication, commitment, and our partnerships with Early Head Start families, community partners, staff, and Governing Board and Policy Council members. It is through this collaboration that we have implemented program enhancements which focus on ensuring improvements to quality services and access to excellent early childhood education. We look forward to continued collaborations with our partners and community stakeholders. Our vision is to expand our Early Head Start Program to serve more children and families. Together we will create new opportunities to improve services within our communities. As we approach a new program year, we will renew our commitment to excellence and to the delivery of high-quality early care and educational services.

John Browne
Early Head Start/Executive Director

WHO WE ARE



Vital Connections of the Midlands Early Head Start provides a comprehensive child and family development program for low-income children birth to age three and their families, as well as pregnant women. In addition to early childhood education, children and families receive health and nutrition services, family development support, access to mental health services, as well as supports for children who are not typically developing.

The goal of the program is to improve child and family outcomes through school readiness, by providing a continuum of comprehensive services that support children's development and family functioning.

Early Head Start serves low-income pregnant women, infants and toddlers from birth to age three and their families who live within our zip codes. Early Head Start is a federally funded program, and VCM has been an Early Head Start grantee since 2010 with a funded enrollment for 80. VCM Early Head Start centers are nationally accredited through the National Association for the Education of Young Children (NAEYC).



PROGRAM GOVERNANCE



Vital Connections of the Midlands, grantee of the Early Head Start (EHS) Program, operates a formal structure of shared governance that enables parents to participate in decision-making and planning. Vital Connections of the Midlands Board of Directors, as the governing body, receives direct input from the Early Head Start Policy Council comprised of parents and community representatives. This structure ensures that the Governing Body, Policy Council, and Parent Committee Representatives from each center and key grantee staff jointly make programmatic decisions that meet the needs of Early Head Start parents and the communities that we serve.

2022 - 2023 Program Governance

Governing Board	Policy Council	Executive Management Team
Carolyn Dorrell- Chairperson Early Childhood Expert	Vanessa Layton - Chairperson, Arthurtown	John A. Browne- Executive/ Early Head Start Director
Tyler D. Bailey, Esq.-Attorney Bailey Law Firm	Shirell Holloway Arthurtown	Holly Scofield- Chief Fiscal Officer
Katy Bair- Treasurer Fiscal Expert	Jaslyn Tate	Karen Noble- Human Resources/Business Manager
Deborah Boone Richland One School		Althea Benson- Education Manager
Dr. Cassandra Legette-Richland One ThriveRichland Coordinator	Shakeema McKay -Secretary- Children's Garden	Gloria Watson- Family Services Manager, Health Coordinator
Carolyn Lyles- Community Outreach/Healthcare	Tara Hyman Children's Garden	Kimberly Capers-BHQ/Mental Health Manager
Mildred Metts- Attorney/ Magistrate Court Judge	Nakasha Johnson Children's Garden	Melissia Miller-Center Director Arthurtown
Rateisha Scott - Blue Cross/Blue Shield HR Manager		Anita Robinson-Center Director Children's Garden
Lochlan Wooten- Riverbanks Zoo Community Outreach	Monya Terry- Community Representative	Tomika Shell-Center Director/ Tender Years
	Fadetra Harrington (Community Rep/Pastor)	Charlene Sumpter-Family Advocate/Arthurtown & Children's Garden
	Tynetta Cohen Tender Years	Schafonda Byrd- Family Advocate/Tender Years
	Simone Pack Tender Years	Christy Rhodes – Coach Mentor
	Kierra Hunter Tender Years	
	Asher Shell Tender Years	

#CHILDCARELETSMEWORK

Hello everyone, my name is Ashley Harley. I am a leader, a student, a friend, a college graduate, but first and foremost, I am a mother to 4 beautiful children Kassidy (12), Kelis (7), Marcel (3) & Marquel (3). Because my two youngest children were enrolled in school at Arthurtown EHS and my other two in public school, I was able to work part time and graduate with my Associate's Degree in Early Childhood Education. I will be continuing my education at Columbia College this fall while still working part time! Sadly, the twins will be transitioning to Gleamns Head Start & Caughman Road Elementary, and we will miss Arthurtown. I have watched my boys grow up so much and I appreciate all the teachers and staff at Arthurtown EHS!

**Sincerely,
Ms. Ashley Harley**



HEALTH & WELLNESS

Early Head Start emphasizes the importance of early identification of health problems. Every child and pregnant mother are involved in a comprehensive health program which includes immunizations, medical, dental, mental health and nutritional services. Vital Connections of the Midlands Early Head Start staff assists families in finding a medical home, locating sources of funding for health services and tracking those health services. In addition, staff partnered with local Medicaid providers to determine a child and pregnant mother's eligibility for medical assistance. VCM Early Head Start program also offered health promotion activities throughout the year, including information about childcare and training, information on child health and development and our annual health fair. The health of our children and pregnant mothers is one of our primary concerns. We provide a comprehensive health service program which includes preventive screenings and exams such as immunizations, Early and Periodic Screening, Diagnostic and Treatment (EPSDT) physical examinations, vision, and hearing screenings, HBG and Lead screenings as well as developmental and mental health screenings. We work closely with families to ensure they identify a medical support service within the community to give them access to accessible, continuous, and comprehensive family centered medical care for years to come. We could not provide comprehensive health and wellness services to our families without collaboration and partnership with members from the community. The following are community partners that have been instrumental in allowing Vital Connections to meet the needs of our families:



Absolute Total Care Medicaid

Absolute Total Care and Vital Connections of the Midlands EHS partner through Absolute Total Care Community Outreach Program. They assist Vital Connections of the Midlands with helping parents establish health insurance for themselves and children as well as contribute by donate/fund projects such as Vital Connections Annual Health Fair and home health items that our parents may not be able to purchase.

South Carolina Dental Screening Associates, LLP

South Carolina Dental Screening Associates, LLP and Vital Connections of the Midlands EHS partner so that enrolled children, families and staff can receive dental assessments performed by a dental hygienist, oral evaluations provided by a dentist, preventive interventions, including oral prophylaxis, fluoride varnish and dental sealants, restorations, pulpotomy procedures, stainless steel crowns and extractions will be performed in the school setting. Referrals will be made for urgent dental needs and specialty care to available local dentist offices for follow-up care and case management.

Birthright of Columbia

Birthright of Columbia and Vital Connections of the Midlands EHS partner so that both agencies can reach pregnant mothers and offer any service needed. VCM make referrals to Birthright Columbia for pregnant mothers who may need counseling, maternity clothing, array of infant items including diapers and formula.

Buckle Buddies

Buckle Buddies is a car seat safety program sponsored through Palmetto Richland Hospital. They offer training classes for our parents focusing on correct installation of car seats. Once parents complete the one-hour training session they are given a voucher to receive a car seat for a discounted price. The Health Coordinator will start a double partnership program with them whereas Buckle Buddies will visit our 3 centers periodically to check for correct installation of car seats.

Eau Claire Cooperative Healthcare Centers

Eau Claire Cooperative Healthcare Centers and Vital Connections of the Midland EHS partner through community outreach. About 40% of our children's pediatric doctors are under the umbrella brand of Eau Cooperative Healthcare. We make referrals for our parents to get transportation to and from doctors' appointments, assistance with household needs, as well as food and clothing. One special part about Eau Claire Cooperative Healthcare Centers, is if the families we're serving health insurance drops we can make a referral, so they can continue to receive health services while trying to reconnect their insurance.

Richland County Sheriff's Department Kid's Print

Richland County Sheriff's Department Kid's Print assist our families with gaining and ID's with includes the child's fingerprints. (Ages 2 and older).

Molina Medicaid

Molina Healthcare assists our families with providing healthcare insurance opportunities.

Healthy Blue Medicaid

Healthy Blue assists our families with providing healthcare insurance opportunities.

South Carolina Department of Health and Environmental Control

SC Department of Health and Environmental Control is starting a new partnership with Vital Connections of the Midlands EHS. They will be assisting our families in nutrition. SCDHEC will host SNAP (Supplemental Nutrition Assistance Program) for our families. These classes will teach them about healthy eating habits and weight control as well.

Wateree Community Actions, Inc.

Wateree Community Actions, Inc. and Vital Connections of the Midlands EHS work together to empower families and communities with low incomes to increase economic stability through partnerships and anti-poverty services.

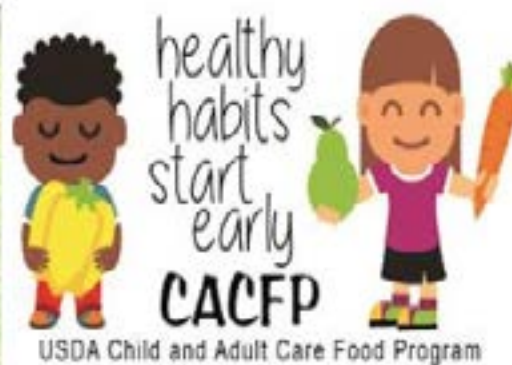
DENTAL & ORAL HEALTH SERVICES

Early Head Start takes a very active role in dental preventive services and promoting oral health care by working with pregnant mothers, our children, and families to emphasize the importance of establishing good oral health habits at an early age and maintaining them throughout life. All pregnant mothers and children receive a yearly comprehensive dental screening and exam. Our children, their families and pregnant mothers are educated in effective dental hygiene practices, including age-appropriate cleaning practices. Oral health education is completed by staff and community partners through workshops throughout the year.



NUTRITION

Meals are served to children in the Early Head Start and Richland First Steps 4K program in accordance with the USDA Child Care Food Program guidelines. Children participating are automatically eligible for free meals provided by the USDA National School Breakfast Program, National School Lunch Program, and the Child and Adult Care Food Program, due to provisions in the Improving Head Start for School Readiness Act of 2007 (Public Law 110-134). VCM Early Head Start secures the services of a local catering company to provide children and low-income families access to food, a healthful diet, and nutrition education. Nutrition Services are supported by staff who are registered dietitians and/or nutritionists. The goal of nutritional services is to assist families in meeting each child's nutritional needs and establishing good eating habits that nurture healthy development. Vital Connections provided meals to ninety-seven children during the 2022-2023 program year.



MALE INVOLVEMENT

Our mission at Vital Connections of the Midlands is to provide opportunities for fathers and significant males to enhance their relationships with their children and families through activities both within the Early Head Start centers and communities. As the novel coronavirus waned, we were able to provide on-site engagement activities for fathers/important males and their children. We held quarterly fatherhood meetings via Zoom, Real Men Read via Zoom, and sent STEM craft activities home for fathers to complete with their children. VCM sent three fathers to the 13th Annual Fatherhood/ Male Involvement Conference in Myrtle Beach, SC. Literacy is a major focus of our program and we strongly encouraged men to read to their children. The men of Vital Connections responded by completing activities and sending pictures of their work. They were actively engaged in zoom meetings and workshops and participated in parent committee meetings. Yes, the program year was different than any of us expected, but our fathers took every opportunity presented to increase their knowledge of child development while learning about available community resources.



MENTAL HEALTH SERVICES

Mental Health Services are supported by staff and/or consultants who are licensed or certified mental health professionals with experience and expertise in serving pregnant mothers, young children, their families, and staff. The focus of mental health services in the Early Head Start Program is to ensure that age-appropriate social and emotional development is occurring in children ages birth to three. Having great mental health helps children to reach those developmental and emotional milestones and learn healthy social skills so that they may function well at school and at home. It can also help children build strong relationships and have better health. Being mentally healthy during childhood helps children develop resilience to cope with different obstacles that they may endure. This will help them grow into healthy well-rounded adults. VCM has identification, prevention, and treatment services that are available to ensure that all children have the skills they will need to be successful in kindergarten. Resources and services are also available which promote the mental health wellness of each child's family and the staff.



DISABILITY SERVICES

Vital Connections of the Midlands supports children and families that they serve. Vital Connections of the Midlands supports children and families by helping them reach their maximum potential regarding their social, emotional, cognitive, and physical development. One of their main goals and focus is to ensure that each child who has a suspected disability, displaying behavioral concerns, or who have been identified as having a disability is valued, supported, and fully included in all aspects of the program. The Behavioral Health and Quality Assurance Manager works cooperatively and collaboratively with Early Interventionists, the family service team, and education staff in assisting families with accessing the appropriate services to ensure that each child's individual needs are being met. By doing this, VCM is ensuring that each child is working towards achieving his/her school readiness goals. The Behavioral Health and Quality Assurance Manager along with the Education staff also helps the child/children work towards meeting the developmental goals that are in place in their IEPs and IFSPs. The child/children's growth is measured through observations and the use of the following online assessment tools: ASQ-3, ASQ:SE-2 and Teaching Strategies GOLD. The results of these assessments provide our parents with feedback on their child's developmental progress. We seek to include 10% of our funded slots for children diagnosed with identified disabilities. Vital Connections of the Midlands Early Head Start Program routinely meets the 10% mandate of children with disabilities.



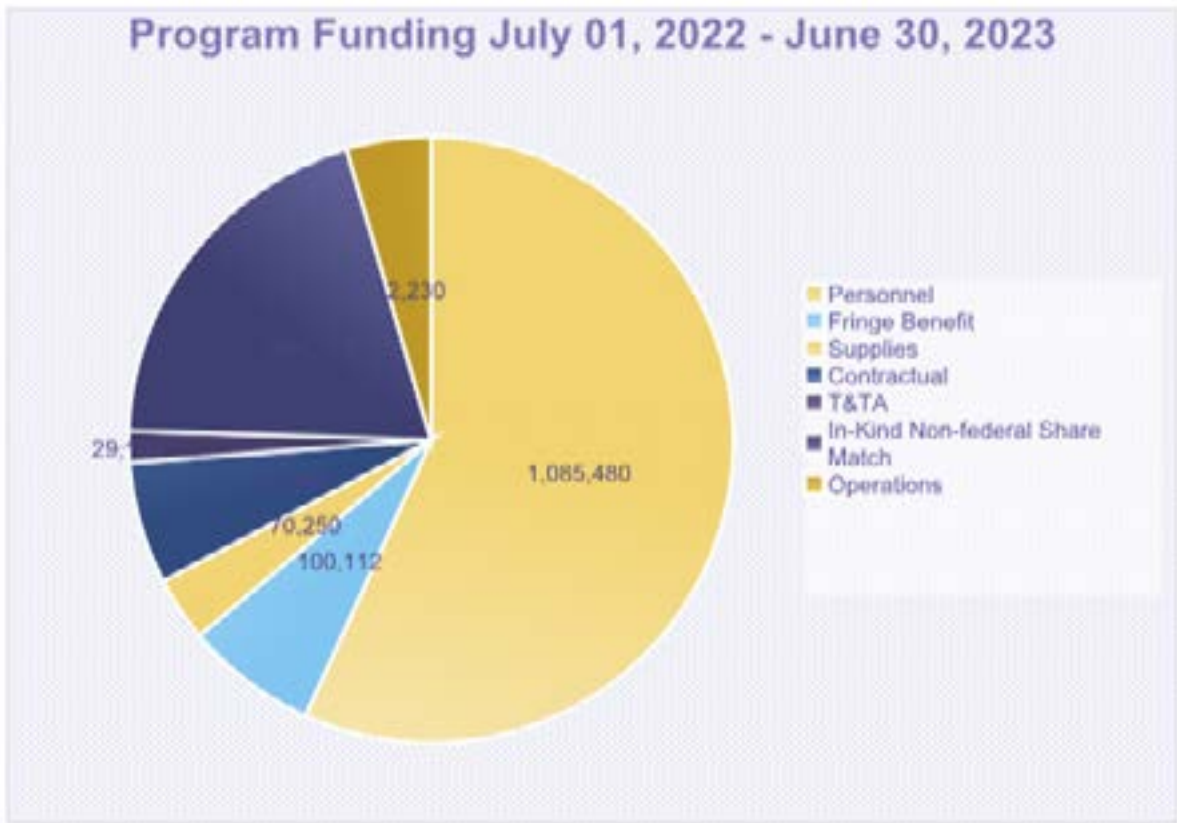
#CHILDCARELETSMEWORK

My name is Pamela Davis and I have been a parent at Vital Connections for eight years. I have four sons, and each one of them had the pleasure of attending Children's Garden. I have one son currently enrolled at Children's Garden. I have also had the opportunity to serve as Chair of the Policy Council Board. Being a parent at VCM gave me the opportunity to pursue my career over the years. While attending nursing school, I was hired as a substitute teacher at VCM in September 2022. Being a parent at VCM has prepared myself and my children for school readiness, lifelong learning, and success, and being an advocate for my children. I will always be grateful for the opportunities VCM gave to me and my family.

Sincerely,
Pamela Davis



FINANCIAL HIGHLIGHTS



Total: \$1,820,588.00

2020-2021 FINANCIAL AUDIT

An independent Single Audit Report, conducted by the accounting firm Hobbs Group, PA, of Vital Connections of the Midlands, Inc., for fiscal year ending June 30, 2021. The Single Audit Report indicated one finding.

PARTNERS

Vital Connections has been very fortunate to have dedicated partners who support our mission of “providing comprehensive, high quality, early care and education for children and families” and our vision “that all children and families in our community have a safe, nurturing environment for early growth and development and a strong foundation for lifelong learning and success.” Among these partners are the United Way of the Midlands, Nord Family Foundation, Dominion Energy, The Lipscomb Foundation, Blue Cross Blue Shield of South Carolina, Absolute Total Care, College Place United Methodist Church, and Forest Lake Presbyterian Church. We have several partners who provided in-kind donations of either their time or services or both. These partners included: JFK Consulting, Everyday Wellness, LLC, Evans Counseling and Consulting, LLC, Vincent Janitorial Services, Kelz Enterprise, LLC, The Weathers Group and Sandy Spann (Food System Consultant (FSC). We could not accomplish our mission without their continued support!

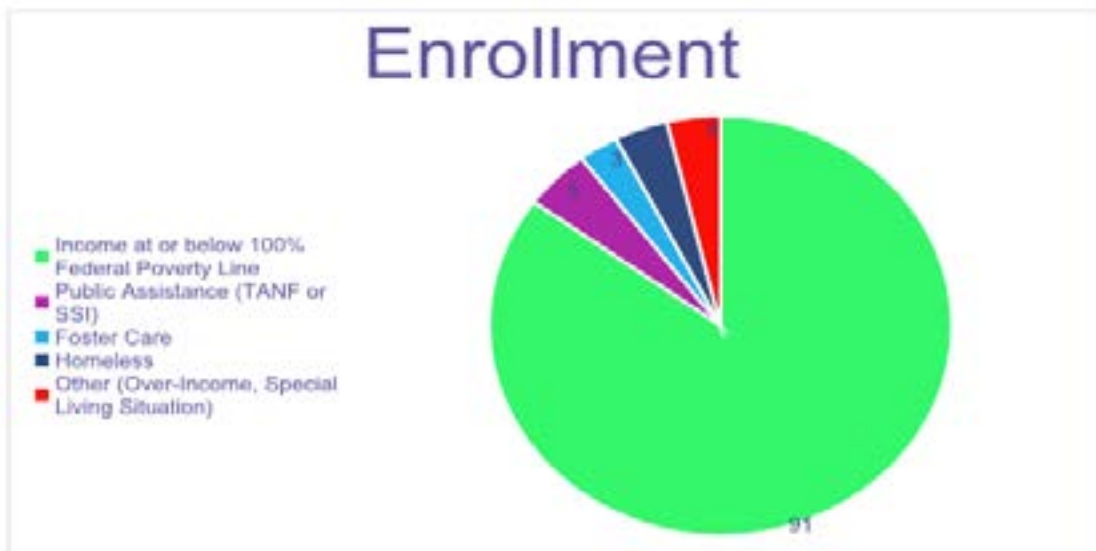


ENROLLMENT AT A GLANCE

Our centers are licensed by the South Carolina Department of Social Services (DSS) and enhanced through A Better Child Care (ABC) program. Children’s Garden and Tender Years are accredited by the National Association for the Education of Young Children (NAEYC). Arthurtown is in the process of NAEYC reaccreditation. Vital Connections of the Midlands oversees Arthurtown, Tender Years, and Children’s Garden. We have been awarded a five-year Early Head Start grant. This grant provides funding to provide comprehensive center-based services to pregnant women, infants, toddlers to age 3 and their families enrolled at Arthurtown Child Development Early Head Start Center and Tender Years Child Development Early Head Start Center. Children’s Garden houses two Early Head Start classrooms and a public school 4K. 4K provides free pre-kindergarten for children who meet the income guidelines.

ELIGIBILITY

Our centers are licensed by the South Carolina Department of Social Services (DSS) and enhanced through A Better Child Care (ABC) program. Children’s Garden and Tender Years are accredited by the National Association for the Education of Young Children (NAEYC). Arthurtown is in the process of NAEYC reaccreditation. Vital Connections of the Midlands oversees Arthurtown, Tender Years, and Children’s Garden. We have been awarded a five-year Early Head Start grant. This grant provides funding to provide comprehensive center-based services to pregnant women, infants, toddlers to age 3 and their families enrolled at Arthurtown Child Development Early Head Start Center and Tender Years Child Development Early Head Start Center. Children’s Garden houses two Early Head Start class-



Parent Satisfaction Survey

Parent Satisfaction Survey was distributed to families via SurveyMonkey email. All families enrolled in the Early Head Start program and Vital Connections program were afforded the opportunity to contribute. 41 Families completed the survey. The key findings were:

Education/Child Outcomes:

- 82.5% of respondents strongly agreed (57.5%) or agreed (25.0%) that they are comfortable with what their child is learning and how my child's progress is being measured.
- 85% of respondents strongly agreed (60.0%) or agreed (25.0%) that the teacher takes good care of their children, helps their child learn how to get along with others and is a good teacher.
- 77.5% of respondents strongly agreed (50.0%) or agreed (27.5%) meeting with teachers provided opportunities to share information about their child's strengths, abilities and progress.

Relationship with Staff:

- 87.50% of respondents strongly agreed (57.50%) or agreed (30.0%) that they had a good relationship with their child's teacher and other staff.
- 85.0% of respondents strongly agreed (57.5%) or agreed (27.5%) that the staff of Vital Connections values their feedback and cares about the wellbeing of their family.
- 88.0% of respondents strongly agreed (62.5%) or agreed (25.5%) that if they have a question or concern, Vital Connections staff is available to answer their question and/or address their concern.

Reputation of Program:

- 77.5% of respondents strongly agreed (57.5%) or agreed (20.0%) with the staff's efforts in providing information to parents about program rules and expectations.
- 100% of respondents strongly agreed (85.0%) or agreed (15.0%) that Vital Connections provides a good learning environment for their child.
- 100% of respondents strongly agreed (77.5%) or agreed (22.5%) that they feel respected by the staff of Vital Connections.

Staff Satisfaction Survey

Staff Satisfaction Survey was distributed via SurveyMonkey email. All Staff members were afforded the opportunity to contribute. Twenty-eight staff members completed the survey. The key findings were:

Respondents

- 50% (14) were teachers,
- 21.43% (6) were managers/supervisors,
- 17.86% (5) were center support staff,
- 7.14% were family support staff and
- 3.57% (1) worked in administration.

Development

- 92.59% of respondents were very satisfied (59.26%) or satisfied (33.33%) with opportunities for professional/personal growth and development.
- 89.29% of respondents strongly agreed (50.0%) or agreed (39.29%) that VCM is dedicated to their professional/personal growth and development.

Workplace environment:

- 96.43% of respondents strongly agreed (50.0%) or agreed (46.43) that they find their work engaging.
- 92.86% of respondents strongly agreed (39.29%) or agreed (53.57%) that they have a good relationship with their co-workers.
- 85.71% of respondents strongly agreed (25.0%) or agreed (60.71%) that they feel valued, cared for and respected by members of management.
- 92.86% of respondents strongly agreed (39.29%) or agreed (53.57%) that they have adequate support to fulfill their daily responsibilities.
- 78.57% of respondents strongly agreed (28.57) or agreed (50.0%) that they can depend on other members of the team.
- 89.29% of respondents strongly agreed (39.29%) or agreed (50.0%) that they would recommend employment at VCM.

If I could change 1 thing:

- 50.0% responded with increased compensation.
- 17.86% responded with better benefits.
- 17.86% responded with better communication with management.
- 7.14% responded with more diverse training.
- 7.14% responded with less trainings.

#CHILDCARELETSMEWORK

My name is Naomi Exum. I have been working at Tender Years for 3 years. My first day was March 16, 2020 (the day VCM closed due to the Coronavirus). I have a son, Amias, who is currently enrolled in the program. He has been at Tender Years since he was 6 weeks old. Throughout my years teaching at Tender Years, I have seen major growth within myself, not only in the classroom, but as a mother. Tender Years has helped me better my communication skills when working with others. I have also learned great teaching strategies from my coworkers that I use daily within the classroom. I have also gained a better understanding of the importance of a child's developmental milestones and engagement. It is a great feeling knowing that my child and I are enrolled in a program that benefits us now and will for years to come.



PARENT ENGAGEMENT

An essential part of Early Head Start is the involvement of parents in parent education, program planning and activities. Vital Connections believes in the importance of building and maintaining strong partnerships with our parents. As their child's first and most influential teacher, parents have a significant role in Early Head Start. Parents are recognized and valued as active members of the program's team. We welcome and encourage parental involvement. Many opportunities exist for volunteering in our program. These opportunities may be helping pass out meals, gardening, reading to the children, and field trips. Participation in classes and workshops on child development and staff visits to the

family's home allow parents to learn about the needs of their children and about educational activities that can take place in the home. Parents are always welcome in the classrooms to help with or lead activities or projects, and to introduce or share their culture with children. There are several ways that parents can help teachers by sharing opinions, ideas, and thoughts, working on projects at home, communicating with the staff, helping other parents feel welcome, and reinforcing learning at home. At VCM Early Head Start program, parents have a voice in administrative and managerial decisions through participation on the Policy Council. VCM Early Head Start program offers parents the opportunity to participate in the following activities:

Early Head Start program offers parents the opportunity to participate in the following activities:

- Family Literacy Functions
- Annual Self-Assessment
- Parent Meetings/Parent Engagement Activities
- Parent/ Teacher Conferences
- Home Visits
- Socializations/PACT
- Policy Council
- Volunteer Opportunities
- Family Partnership Agreement
- Input into curriculum/Input into program planning and input into lesson plans
- Training and/or resource and referral information

Highlighted Activities/Workshops

- Budgeting and Savings
- Muffins for Moms
- Donuts and dads
- Real Men Read
- Ladies Love Literacy
- Transition to Kindergarten
- Reducing Violence through Family Empowerment
- Affordable Housing
- Family Reading Day
- Spring Fling Festival
- Winter Wonderland Festival

SCHOOL READINESS AND CHILD OUTCOMES

The most important goal of our early childhood curriculum, The Creative Curriculum for Infants, Toddlers & Twos, is to help children become enthusiastic learners by encouraging them to be active and creative explorers.

Our goal is to help children become independent, self-confident, inquisitive learners. We are teaching them how to learn, not just in early care and education, but throughout the course of their lives. We are allowing them to learn at their own pace and in the ways that are best for them. In addition to Creative Curriculum, one of our supplemental resources used in our classrooms includes the Conscious Discipline Curriculum. Children are assessed using the Teaching Strategies Gold Assessment. The thirty-six objectives are aligned with the SC Department of Education Early Learning Standards, the Domains in the Head Start Early Learning Framework and SC Infant Toddler Guidelines. All promote positive outcomes in Early Childhood Programs serving children 0-3 years old. Our over-arching program goal is that by 2024 all children will increase their school readiness scores by 15%. Annually, every child will increase school readiness scores by 5%, measured by Teaching Strategies Gold (TS Gold). School Readiness means that children are ready for school, families are ready to support their children's learning, and schools are ready for children.



Preparing Children for Kindergarten & Beyond

The Vital Connections of the Midlands EHS program uses the Teaching Strategy GOLD Assessment

System to track our children's growth in the school readiness domains listed below:

- **Social-Emotional**
- **Physical**
- **Language**
- **Cognitive**
- **Literacy**
- **Mathematics**

The impact of the Novel Coronavirus waned to some degree (no classroom or center closures), however we still faced significant challenges with attendance due to COVID and other illnesses (influenza, RSV, hand, foot and mouth, etc.). VCM was able to compile data for the full 2022-2023 checkpoint periods. Vital Connections of the Midlands 4th checkpoints for the school year 2022-2023 were finalized August 3, 2023. 80 students were enrolled at the closing of this Summer Checkpoint. 69 were actively engaged in the classrooms at both centers. 9 are pregnant moms. VCM teaching staff has always captured those moments when children are meeting or exceeding in domains that are recognized nationally for outcome data. VCM teaching staff has always captured those moments when children are meeting or exceeding in domains that are recognized nationally for outcome data. The school readiness scores for the 2022-2023 program in each of the domains:

- **Social & Emotional – 69.57% of children met and 17.39% exceeded expectations.**
- **Cognitive – 75.36% of children met and 20.29% exceeded expectations.**
- **Language – 72.46% of children met and 7.25% exceeded expectations.**
- **Literacy – 75.36% of children met and 14.49% exceeded expectations.**
- **Physical – 69.57% of children met and 23.19% exceeded expectations.**
- **Math – 72.46% of children met and 17.39% exceeded expectations.**

Outcomes were higher than the first two years of the pandemic and in line with historical averages of the agency.



PARTNERSHIPS

VCM thanks all Parents, Policy Council Members, Board of Director Members, Staff, and Community Partners for their support for the children and families enrolled in VCM Early Head Start program. We will continue to provide exemplary services to the children and families of our community.

United Way of the Midlands

Provides 38% of our Non-Federal Share match for the Early Head Start grant, and ongoing support for Vital Connections of the Midlands.

Nord Family Foundation

Provides 14% of our Non-Federal Share match for the Early Head Start grant, and ongoing support for Vital Connections of the Midlands.

South Carolina Baby Net

Assists with the assessment of disabilities for our Early Head Start Children.

Richland County School District One

Provides special education services, transition services, and one board member.

Women, Infant, Children (WIC)

Provides screening for Early Head Start children's nutrition and physical needs.

Blue Cross Blue Shield of SC

Provided funding for our annual health fair.



**For more information on Early Head Start at Vital Connections of the Midlands
Please call: 803-661-8685**



Vital Connections
of the Midlands

CONTACT US

EMAIL:

VITALCONNECTIONS@VCMEHS.ORG

WEB:

WWW.VITALCONNECTIONSMIDLANDS.ORG

OUR LOCATIONS

ARTHURTOWN
223 RILEY STREET



CHILDREN'S GARDEN
1231 BLUE RIDGE TERRACE



TENDER YEARS
6862 LOWER RICHLAND BLVD

